

# Going the Distance:

## CCSF Libraries' Online Instruction



<https://flic.kr/p/fZzrGL>

# About the College

- ~67,000 Students [Credit & non-Credit]
- 5.9% online enrollment [credit students]
- Current LMS is Moodle





# About the Library

- One main library
- 6 center libraries
- 2 more being added
- 22 FT Librarians
- ~15 PT Librarians
- ~29 classified staff

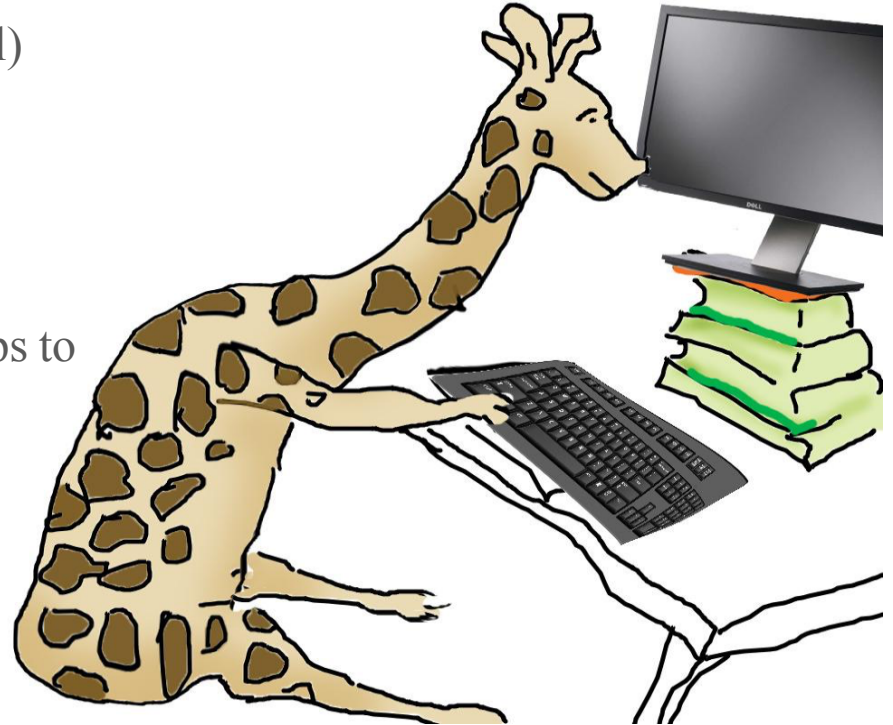
# CCSF Library Information Competency Team

- 6 Librarians on team
- Brainstorm
- Meet frequently
- Develop curriculum
- Individual strengths



# The Library and Distance Learning: Strategies

- Library research skills workshops (7 total)
- LIS 10 course
- Embedded librarians pilot and beyond
- Tech tools & Library resources workshops to college faculty
  - Evernote
  - Films on Demand (integration into LMS)
  - NoodleTools



# CCSF Library Research Skills Workshops

- Started ~15 years ago
- Was offered in person only, then online
- Linked to general education Area B written composition
  - 2006
  - Out of class assignment in ENGL 1A COR
- LIS 1000
  - non-credit
  - course outline



# Library Workshops

- G: Library orientation
- A: Library Catalog
- B: Periodical databases
- C: Web search techniques
- W: Resource Evaluation
- P: Citations
- D: Research capstone



<https://flic.kr/p/4pFu6L>

# Library Workshops: Success

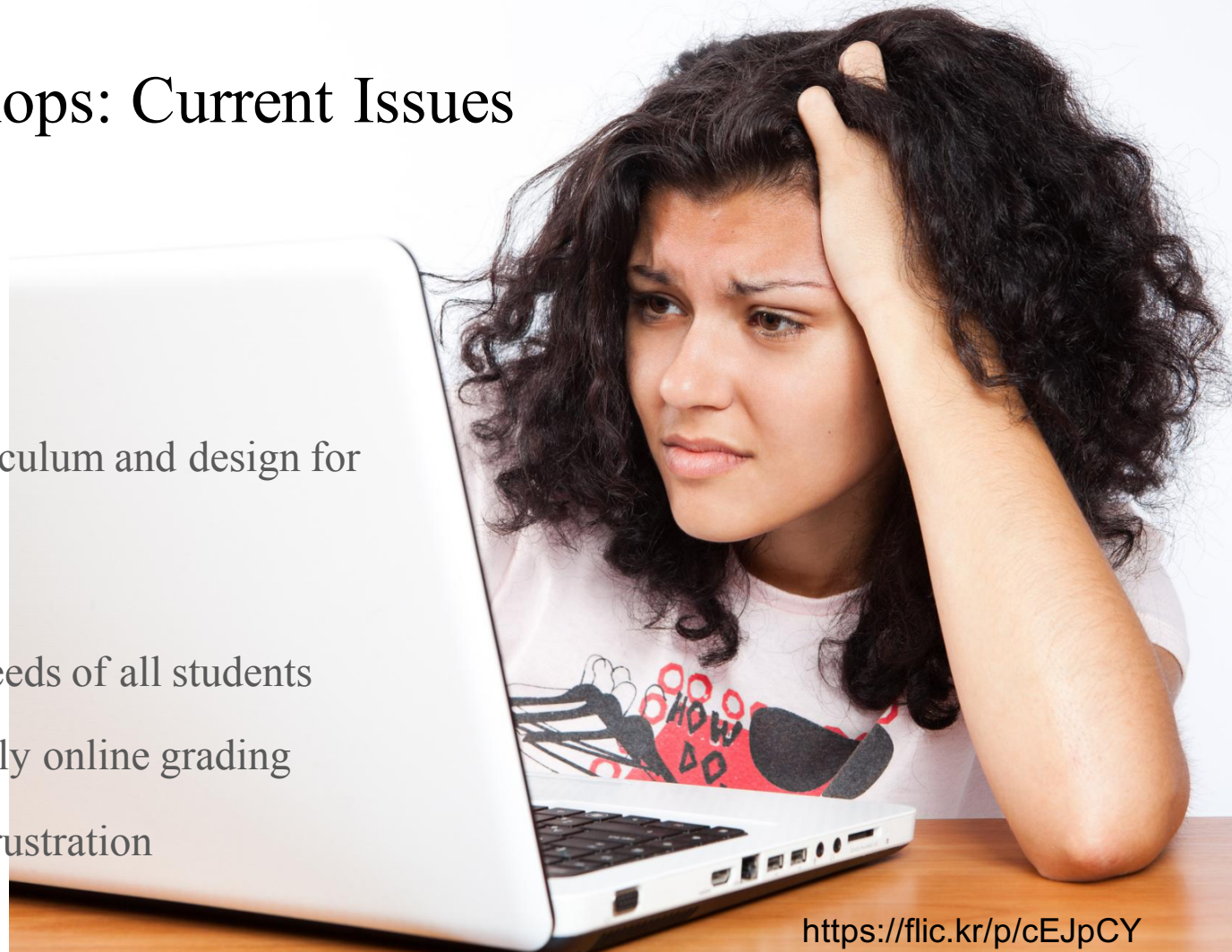
- Faculty embraced the workshops
- .....and still do
- Not just ENGL faculty
- ~8,500/annually are completed
  - from 174 in-person in 2005
- Assessments lead to Citation Workshop
- Workshops are interactive





# Library workshops: Current Issues

- Things change
- Scripted in php
- 50 minute model
- No change in curriculum and design for several years
- Cluttered design
- Not meeting the needs of all students
- Cannot support fully online grading
- Students express frustration





# Library Workshops: Solutions or New Model

- Multimedia rich modules created in Adobe Captivate
- Break away from course outline, but keep it as an IC requirement
- Bite-size modules
- Based on learning theories (e.g. constructivism and cognitive load theory)
- Remediation and branching
- More engaging

# New Library Workshops: Distance Ed Advantages

- Faculty can embed modules in their course shells
- Librarians to be embedded to offer
  - assistance to faculty
  - instruction and feedback to students
  - custom feedback where necessary
- Learners can save their work and return to it later
- SCORM integration makes it easy you to gather reports for assessment

# Library Workshop Development

- First module planned to be completed in November
- Usability testing planned for end of November
- Start on 1-2 new modules in Spring 2016



# Library Workshops: Redesign Challenges

- Educational Technology department understaffed
- 24/7 access to workshops in LMS
- College possibly moving to Canvas in near future  
—
- Library staffing & Professional Development
- Fear of change



# Challenge Solutions

- Professional development workshops by librarian(s) to train in Captivate
- Librarians do have skills in creating other multimedia objects
- College subscription to Lynda.com (for Captivate training)



# Embedded librarians and embedding strategies

- Piloted program 2-3 years ago in the CAHS and ENGL departments
- Librarians created discussion forum
- Librarians chimed in during key weeks
- Amount of usage at time did not warrant continuation of program
- Focusing on outreach
- New modules can possibly be a link to embedding library in LMS

# Embedded librarians and Embedding Strategies

- Library block in LMS
- Research guides in course shells
- Research guide specific to DE courses
- One librarian still embedded in 5-6 classes per semester
- Plan to add widget or discussion forum in all Moodle classes
- Librarian on distance advisory council & other committees
- Subject Workshops online via CCCConfer & Elluminate





# References

Slide 2: [http://datamart.cccco.edu/Students/Student\\_Term\\_Annual\\_Count.aspx](http://datamart.cccco.edu/Students/Student_Term_Annual_Count.aspx)

Slide 6:

[https://www.ccsf.edu/dam/Organizational\\_Assets/Department/library/Assessment/IC\\_chronology.pdf](https://www.ccsf.edu/dam/Organizational_Assets/Department/library/Assessment/IC_chronology.pdf)

Slide 8:

[http://www.ccsf.edu/dam/Organizational\\_Assets/Department/library/Assessment/SATS\\_IlrStatsSummary2009-14.pdf](http://www.ccsf.edu/dam/Organizational_Assets/Department/library/Assessment/SATS_IlrStatsSummary2009-14.pdf)

# Contact

Michele Alaniz

Distance Education & Electronic Resources Librarian

City College of San Francisco Library

415.452.5549

[malaniz@ccsf.edu](mailto:malaniz@ccsf.edu)